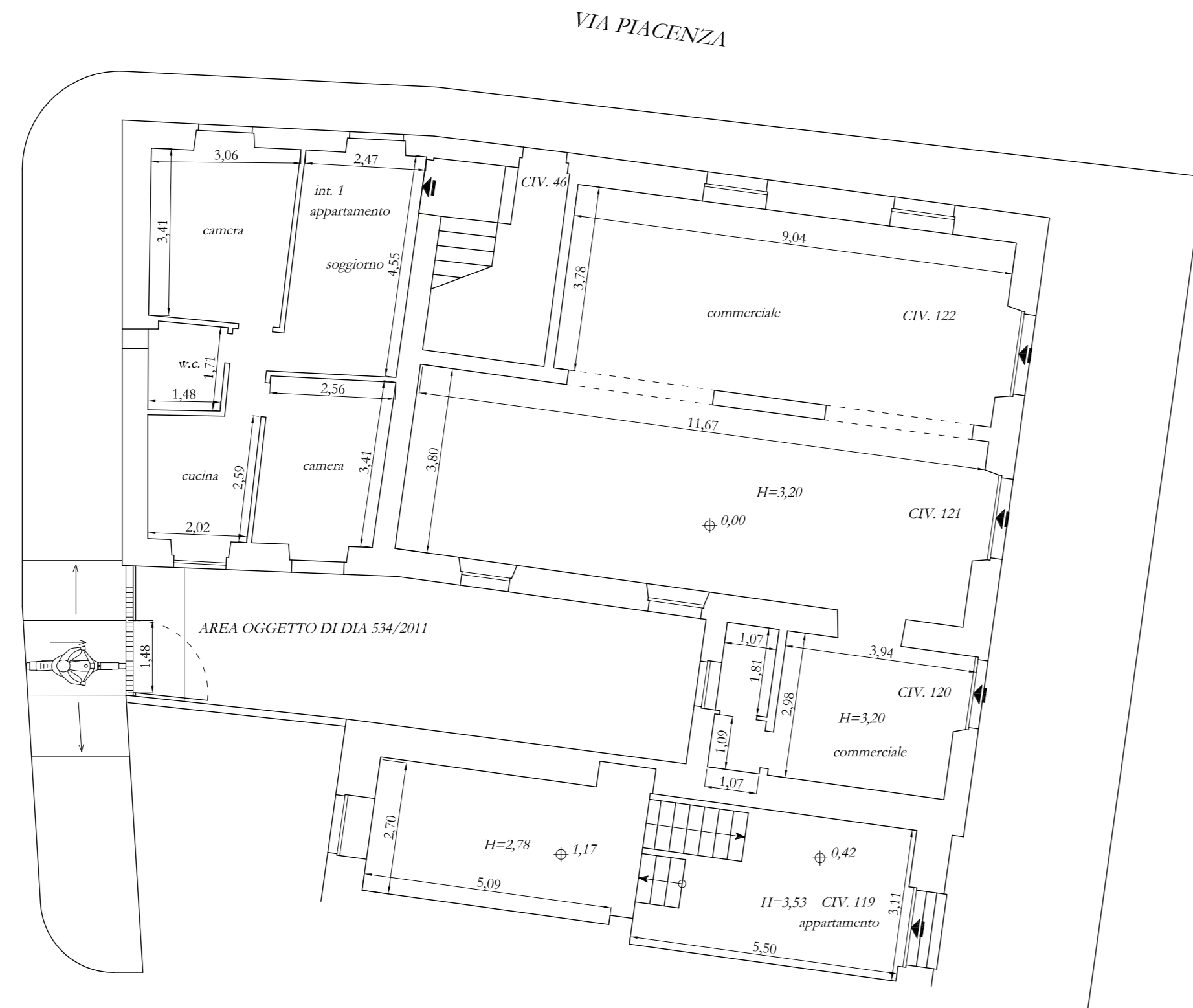
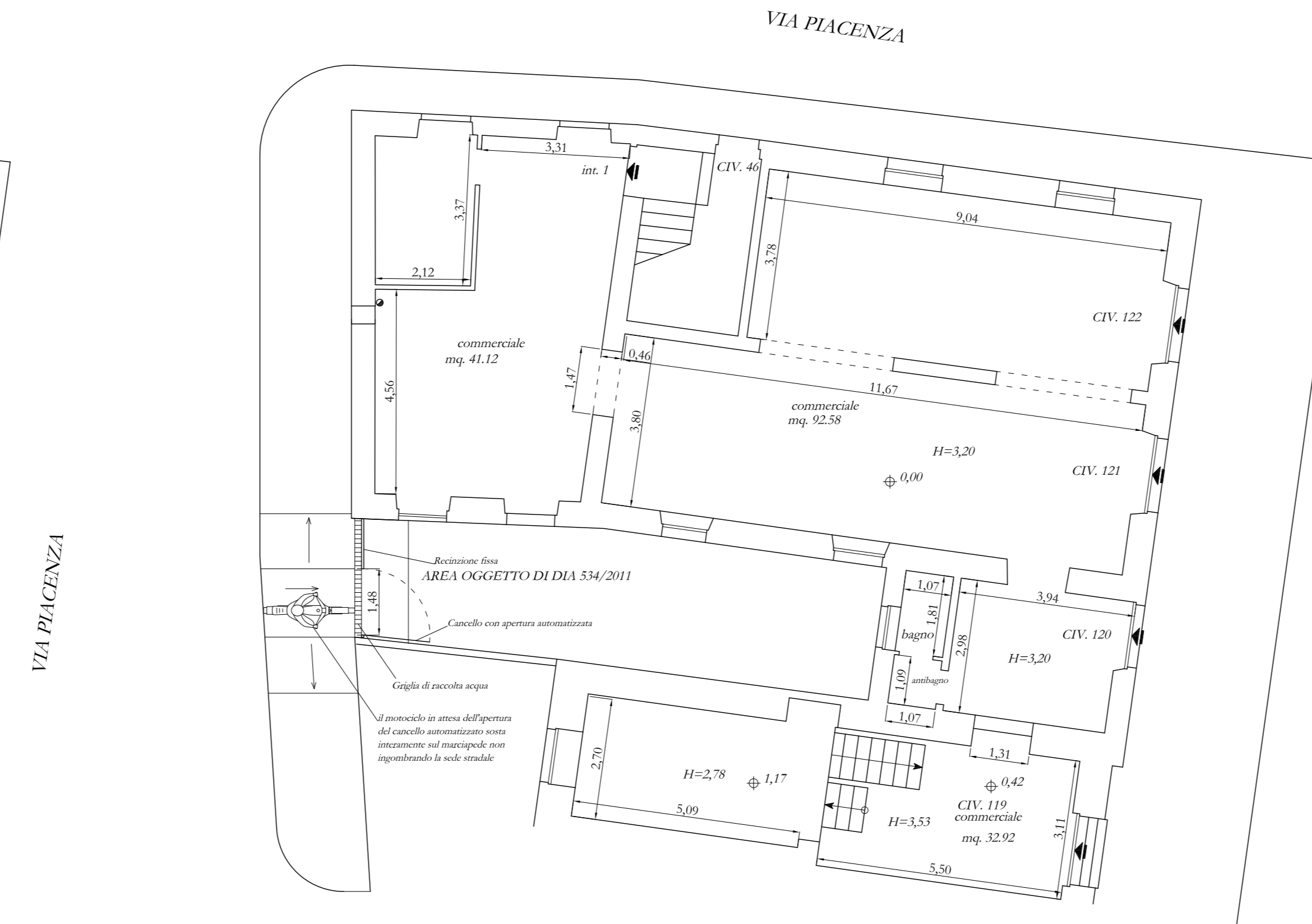


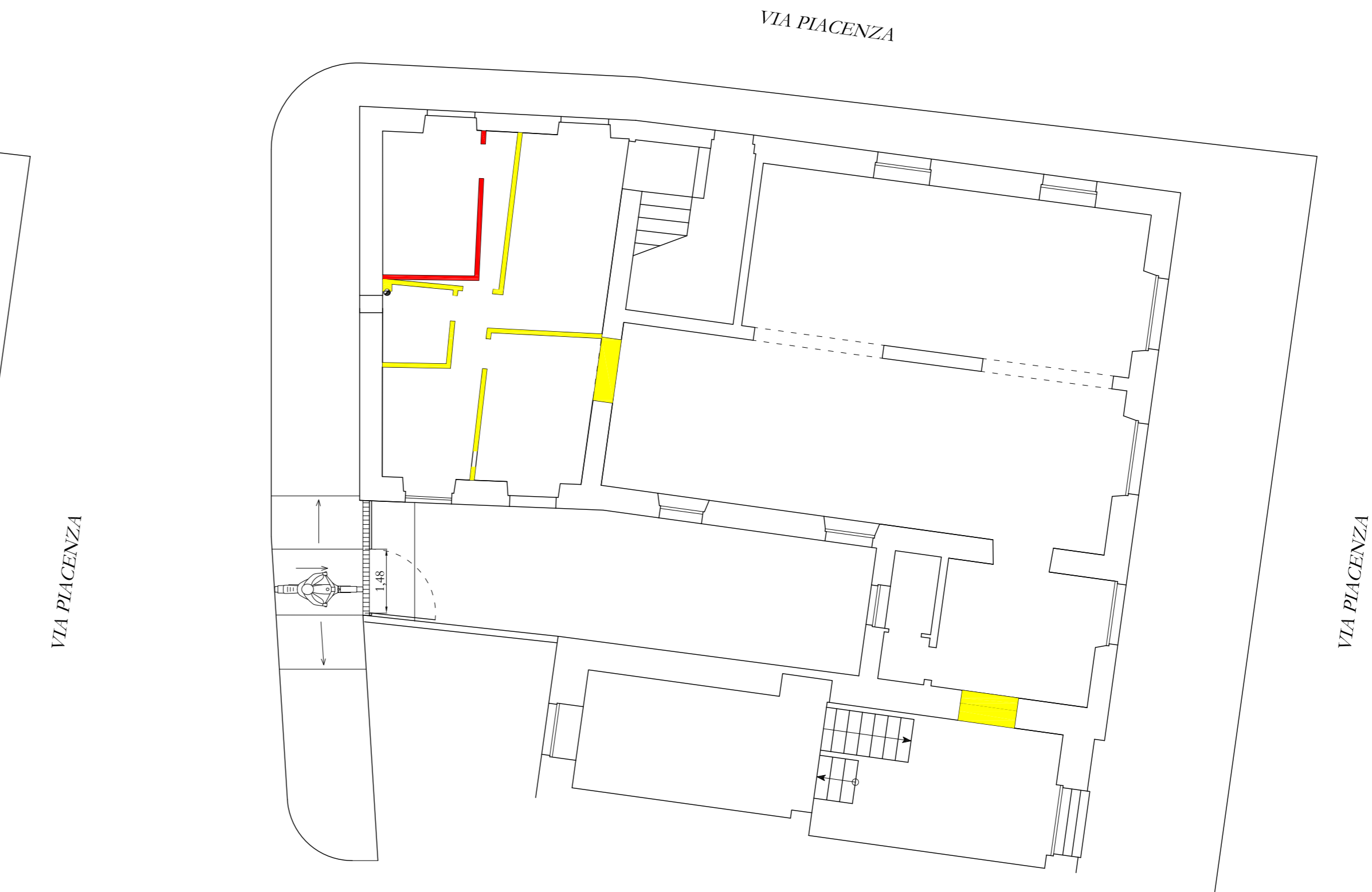
STATO PREESISTENTE PIANO TERRA



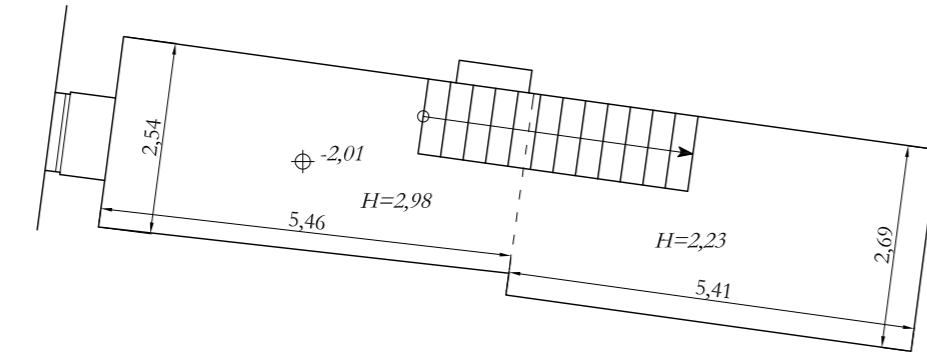
STATO ATTUALE PIANO TERRA



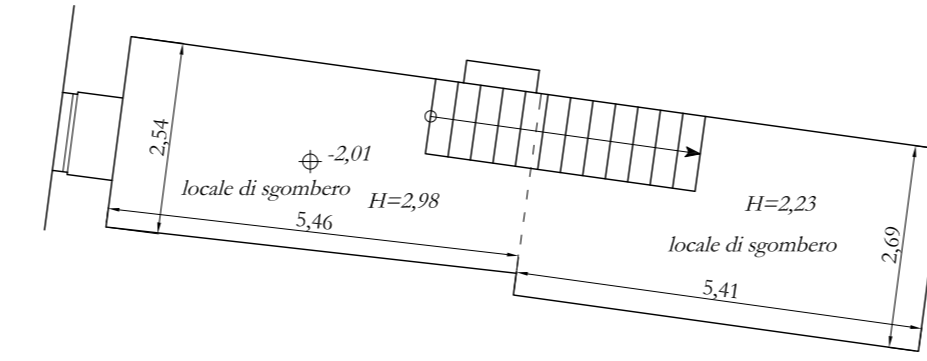
STATO DI CONFRONTO PIANO TERRA



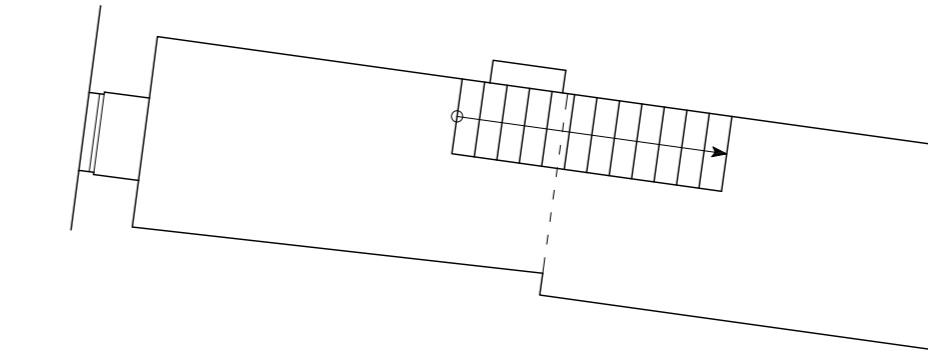
STATO PREESISTENTE PIANO SEMINTERRATO



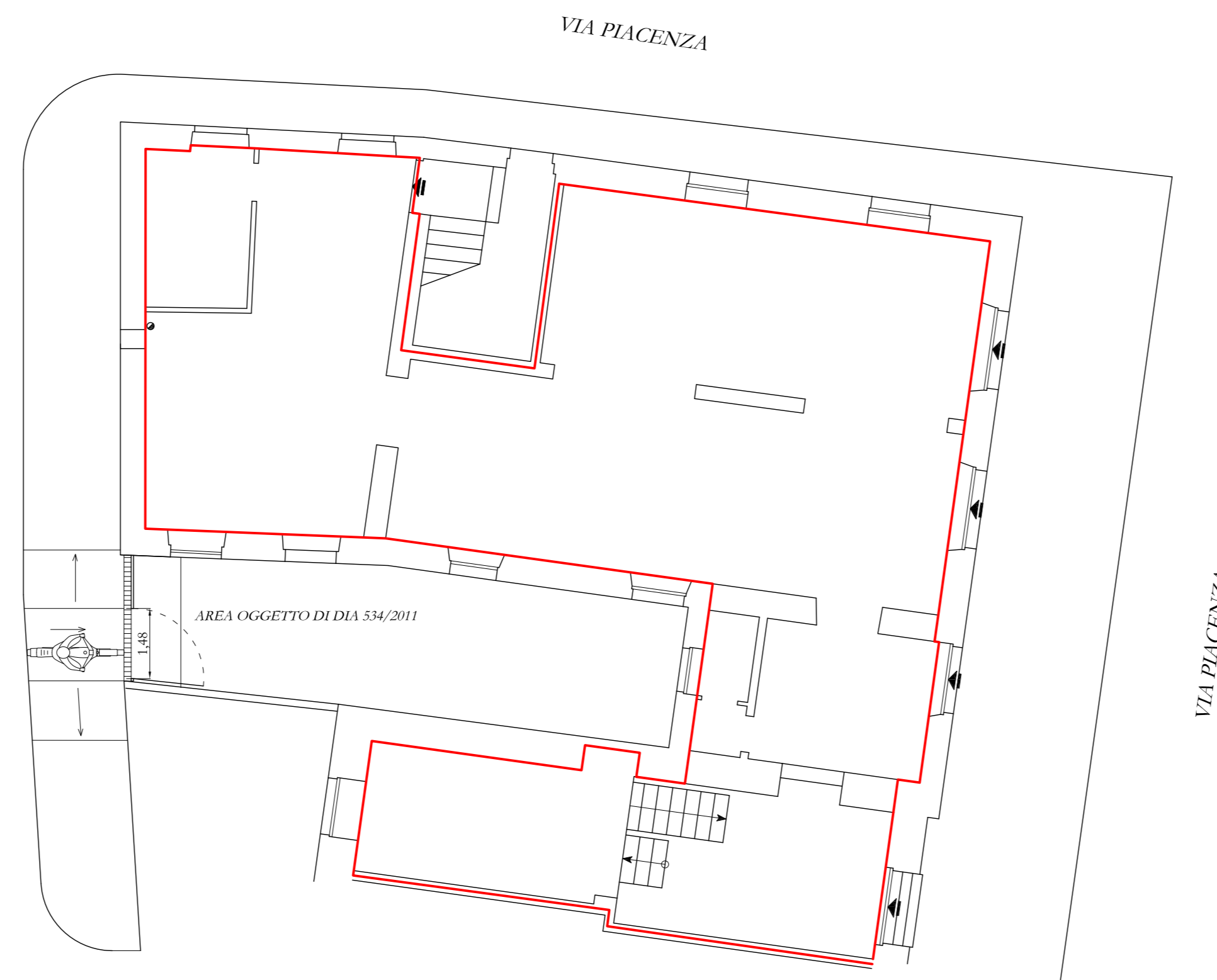
STATO ATTUALE PIANO SEMINTERRATO



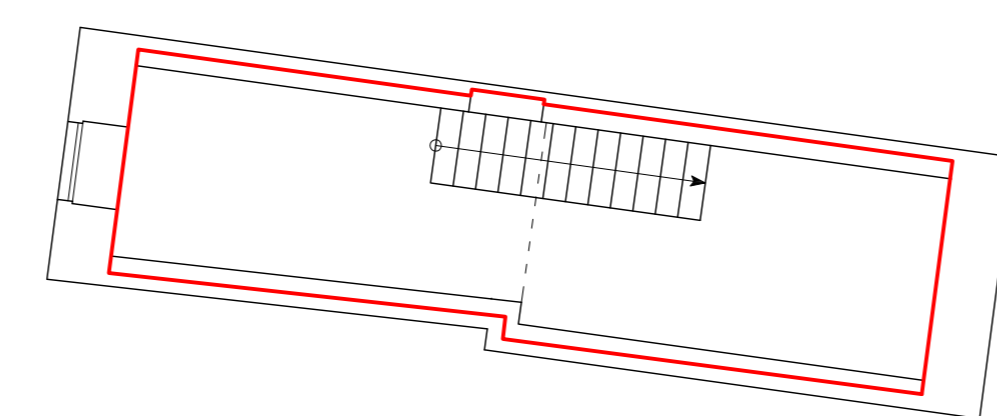
STATO DI CONFRONTO PIANO SEMINTERRATO



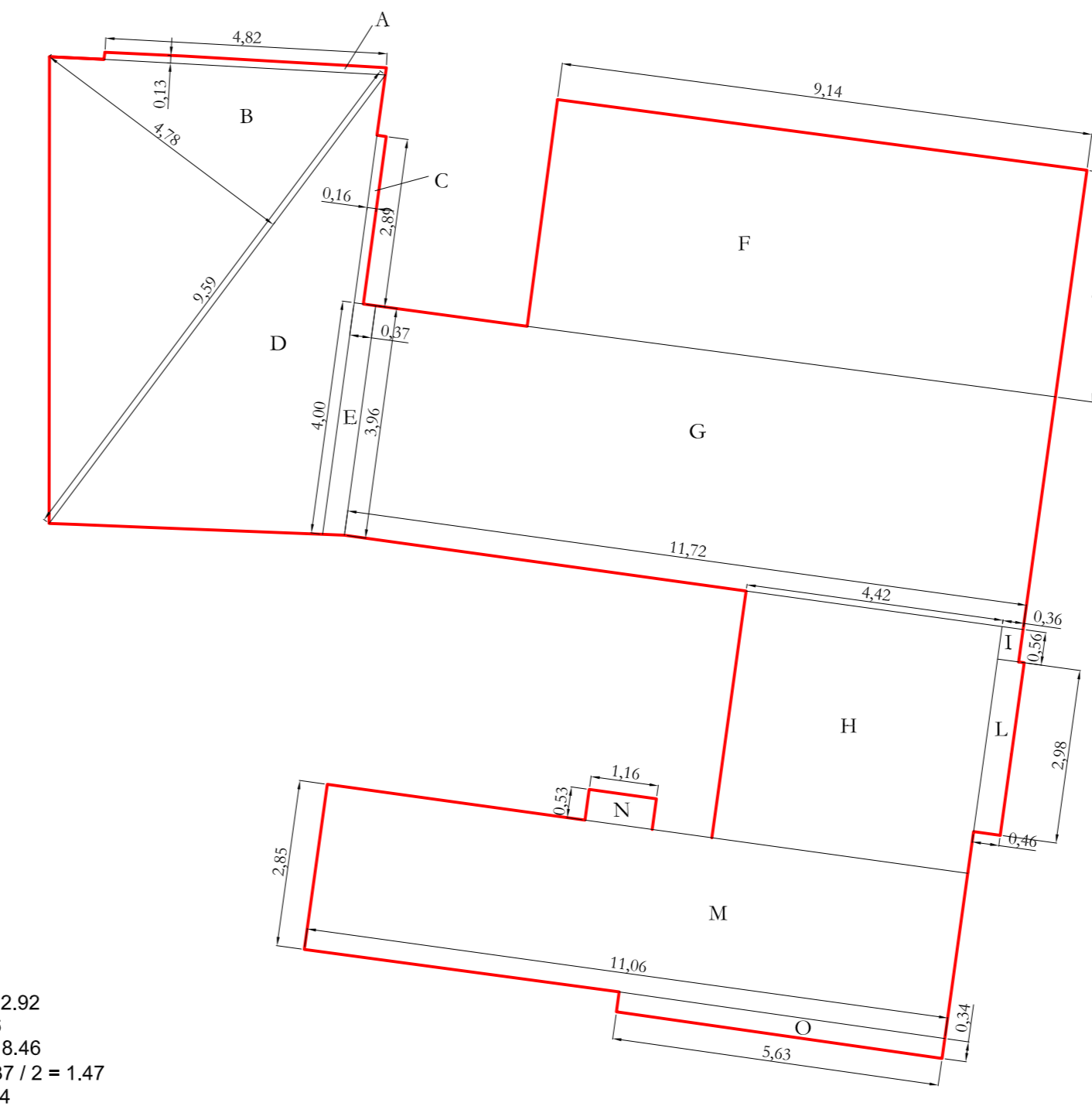
PERIMETRO PER CALCOLO SUPERFICI PIANO TERRA



PERIMETRO PER CALCOLO SUPERFICI PIANO SEMINTERRATO



CALCOLO SUPERFICI PIANO TERRA



- A = 4.82 X 0.13 = 0.63
- B = 9.59 X 4.78 / 2 = 22.92
- C = 2.89 X 0.16 = 0.46
- D = 9.59 X 3.85 / 2 = 18.46
- E = (3.59 + 4.00) X 0.37 / 2 = 1.47
- F = 9.14 X 3.91 = 35.74
- G = 11.72 X 3.96 = 46.41
- H = 4.26 X 4.42 = 18.83
- I = 0.56 X 0.36 = 0.20
- L = 2.99 X 0.46 = 1.37
- M = 11.06 X 2.85 = 31.52
- N = 1.16 X 0.53 = 0.61
- O = 5.63 X 0.34 = 0.62
- P = 0.97 X 0.08 = 0.038
- Q = 6.01 X 2.55 / 2 = 7.66
- R = 6.01 X 2.92 / 2 = 7.97
- S = 6.40 X 2.67 / 2 = 8.54
- T = 6.40 X 2.72 / 2 = 8.70

TOTALE = 212.05 mq

CALCOLO SUPERFICI PIANO SEMINTERRATO

